

## 2019 ANTLER POINT RESTRICTION NOTICE

USAG West Point will be instituting an Antler Point Restriction (APR) component to the local deer hunting regulations.

Starting 16 November 2019, the NYS Big Game Regular Season Opening Day, and thereafter hunters pursuing antlered deer in selected areas of the reservation must limit themselves to bucks with no less than three, one inch points (to include the brow-tines if present) on at least one antler.

For those preferring not to participate in this initiative, portions of the reservation shall remain exempt from this new regulation.

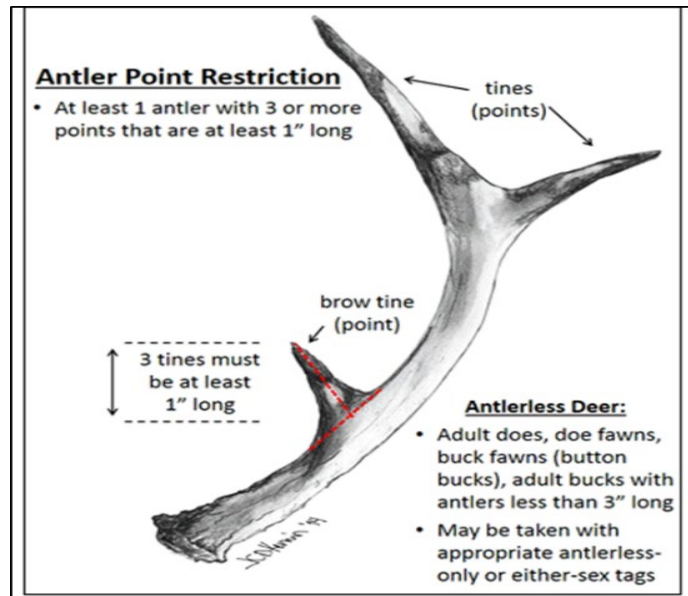


Figure 1. Diagram showing the Three-On-One-Side Antler Point Restriction being implemented at West Point in 2019. Diagram and Regulation descriptions pictured taken from NYSDEC website.

The language of the new regulation is as follows:

**“ All antlered deer harvested from Hunting Areas included in the table below must display no less than three, one inch points (to include the brow-tines if present) on at least one antler. This regulation shall be in effect for all NYS Big Game Seasons (Early, Regular, and Late), all customer types, and all hunting implements. All other New York State and local procedures and bag and season limits will remain in effect. Failure to comply will result in the suspension of hunting privileges for the remainder of the current hunting season as well as the successive seasons. ”**

**The APR applies to all hunters hunting within these areas.**

A1	A2	A3	B	Buckner Bow	C	CS
CS 2 Bow	D1	D2	D3	E1	E2	F
G1	G2 Bow	H	J1 Bow	J2 Bow	J3 Bow	J4 Bow
J5 Bow	K Bow	M	RP Bow	T1	T2	U1
U2	V/W 2 Bow	X	Y	Z1	Z2	Z4
Z5	Z6					

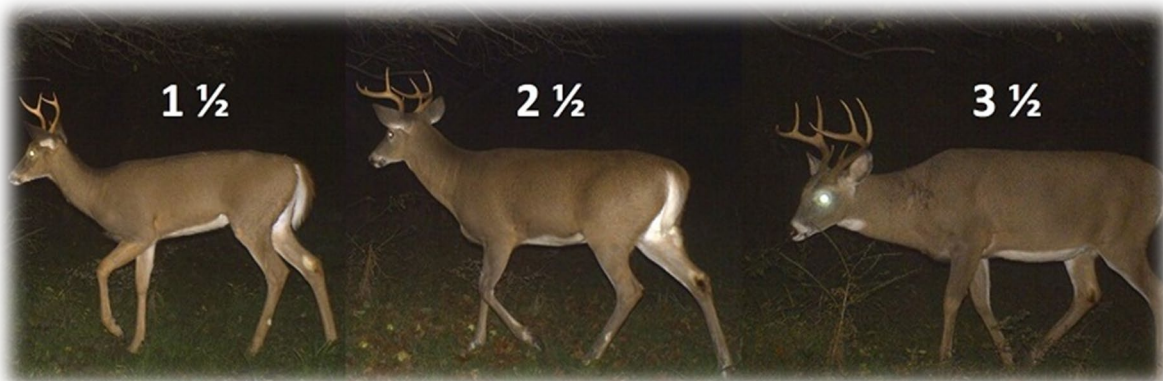
*Table 1. West Point hunting areas regulated by the Antler Point Restriction (APR) implemented in 2019.*

**Deer hunters accessing these areas are exempted from the APR regulation.**

R Disabled Hunting	Constitution Island	I	L	N
O	P	Q	R	S

*Table 2. West Point hunting areas not regulated by Antler Point Restriction (APR) implemented in 2019.*

### Differences in Typical Buck Antler and Body Size by Age



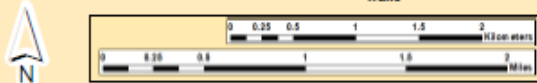
*Figure 2. Picture showing differences in typical buck antler and body size by age. Bucks in the picture are yearling or one and a half year old (far left) to two and half year old (center) to three and a half year old (far right). Picture taken from NYSDEC website.*

**\*\* See the attached map for a breakdown of APR and Non-APR Hunting Areas.**



# West Point Deer Hunting Map /w 2019 Antler Point Restrictions

## Legend

- |   |  |
|---|--|
|  Hunting Area                |  Intermittent Streams |
|  Off Limits/UXO Danger Area  |  Permanent Streams    |
|  Waterfowl Area              |  Gates                |
|  Bow Hunting Only Area       |  State Roads          |
|  Cadet Bow Hunting Only Area |  Roads                |
|  Disabled Hunters Only Area  |  Lakes & Ponds        |
|   |  Trails               |



## Antler Point Restrictions

-  APR
-  Not APR

## Please Note

- All ranges, range buildings, facilities, vehicles and equipment are off limits to all unauthorized personnel. Hunters may not hunt on nor from within such facilities.
- Hunters may not carry weapons in the ASP, Morgan Farm, Camps Buokner & Natural Bridge, in Lake Frederik and Round Pond Recreation Areas, golf course or other developed areas.
- Lusk Reservoir, Round Pond, Lake Frederik, The Cragston Lakes, and Long Pond are not Waterfowl Areas. At those waterbodies, fishing is permitted, but all hunting is prohibited.

## Contacts

-  Fire Department.....(845) 938-3001
-  DES Conservation Law Enforcement.....(845) 590-1345
-  Range Control.....(845) 938-3930
-  Natural Resources Branch..... (845) 938-7122

IN CASE OF EMERGENCY, DIAL:  
Military Police at Provost Marshall Office (PMO) at (845)-938-3333 or 911

