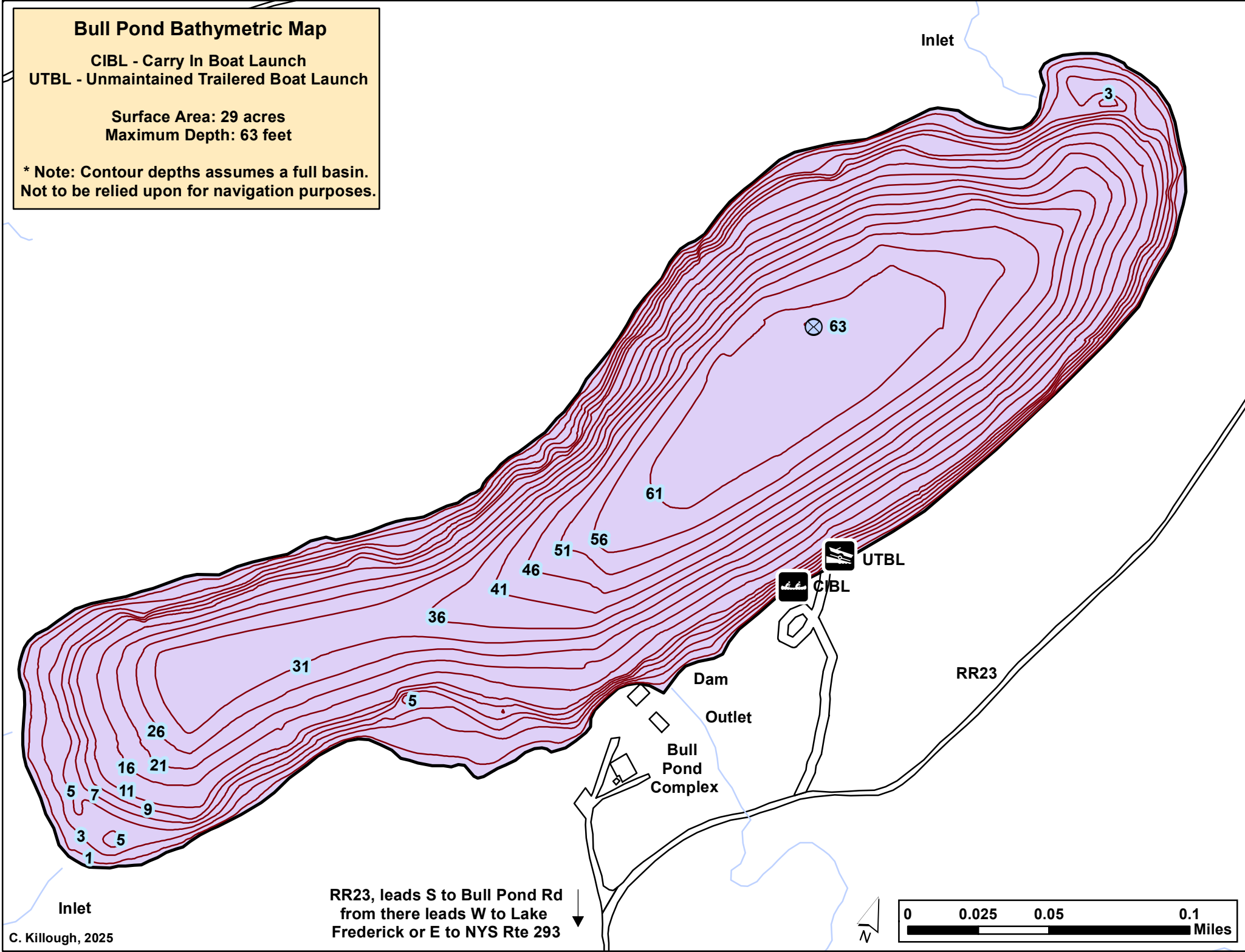


Bull Pond Bathymetric Map

CIBL - Carry In Boat Launch
UTBL - Unmaintained Trailered Boat Launch

Surface Area: 29 acres
Maximum Depth: 63 feet

* Note: Contour depths assumes a full basin.
Not to be relied upon for navigation purposes.



RR23, leads S to Bull Pond Rd
from there leads W to Lake
Frederick or E to NYS Rte 293